



RADLEY

SPRING / SUMMER 2025
OPTICAL COLLECTION

SPRING / SUMMER 2025

Optical collection

- 5 Models / 15 skus.
- Eye sizes ranging from 50 - 54 eye.
- Inspired by the Radley's Spring Summer Collection, the Radley Optical collection infuses elements from Radley's seasonal handbags, jewellery and colour palette.
- From feminine tones of sage green, crystal pinks and purples, to stylish laminations and bold pops of Yves blue, this collection brings a fresh and contemporary look to the Radley eyewear collection.



This symbol indicates a hero piece used in publicity shots

Front cover: RDO-6061-172

Below (left to right): RDO-6062-117 & RDO-6061-108

©2024 Inspec Limited. All rights reserved. Inspec is a registered trade mark of Inspec Limited



BRAND ORIGINS

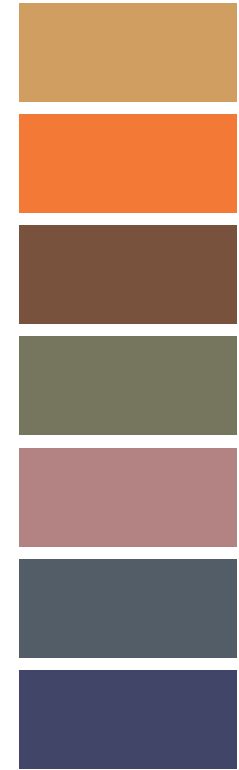
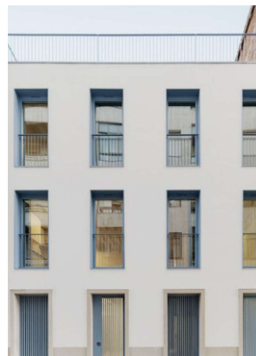
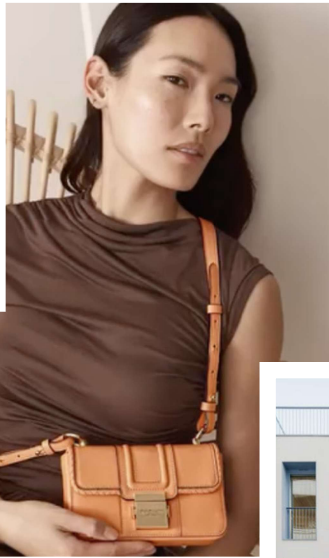
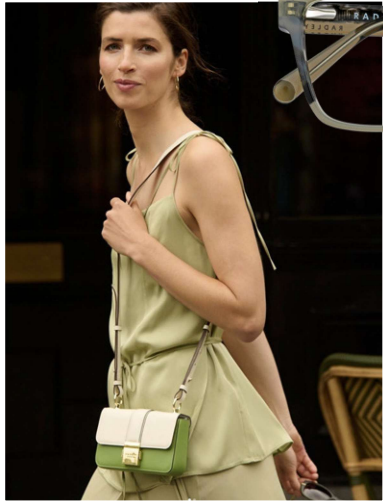
The home of British handbag design. For over 25 years, Radley have been the proud architects of luxurious leather handbags and accessories with their signature refinement and attention to detail.

Known for the perfect combination of style on the outside and functionality on the inside, they expertly blend iconic design, exquisite craftsmanship and exceptional value.

The brand's London HQ is home to their talented in-house Design team, who are inspired by everything from global catwalk trends to the incredible women who wear their bags. Each design is then made with expert care by up to 20 skilled artisan craftspeople, using some of the finest leathers and materials.

Alongside, they're innovating in sustainable new non-leather alternatives as part of their Radley Responsible range, made using recycled plastic bottles. Just part of their ongoing commitment to protecting the future of our planet.








COLOUR PALETTE
SPRING/SUMMER 2025

Optical collection

COLLECTION MATRIX

TREND	 RDO 6062		
	 RDO 6061		
CORE	 RDO 6055	 RDO 6058	 RDO 6059
	ACETATE / ACETATE RENEW	HD ACETATE	COMBI (Acetate / metal)

RDO 6062

Bold square eye for the modern Radley women. Handmade acetate front and temples with metal bar detail.



RDO 6062 • 101

Gloss brown horn / Bronze & gold



RDO 6062 • 109

Gloss crystal olive / Purple patterned tort & gold



RDO 6062 • 117

Gloss blue tort / Yves blue & shiny gold



- Acetate Stainless steel
- Spring hinge
- 53 - 17 - 140 B: 41.7
- Base curve: 450
- ED: 61.9
- Panto angle: 14

RADLEY

RDO 6062

Bold square eye for the modern Radley women. Handmade acetate front and temples with metal bar detail.



RDO 6061

Elegant cat eye. Style features peekaboo laminations on front and curved laminations at temple.



RDO 6061 • 108

Gloss grey tort / Crystal olive & rhodium



RDO 6061 • 117

Gloss blue tort / Yves blue & rose gold



RDO 6061 • 172

Gloss crystal pink / Tort & rose gold



- Acetate
- Spring hinge
- 54 - 16 - 140 B: 41.7
- Base curve: 450
- ED: 59.6
- Panto angle: 13

RADLEY

RDO 6061

Elegant cat eye. Style features peekaboo laminations on front and curved laminations at temple.



RDO 6059

Classic Panto style. Slim ruffle metal temples inspired by Radleys spring collection and handmade acetate tips.



RDO 6059 • 102

Gloss tort / Matte gold & gloss black



RDO 6059 • 109

Gloss olive crystal / Matte rose gold & gloss purple patterned tort



RDO 6059 • 161

Gloss purple patterned tort / Matte bronze & gloss purple patterned tort



- Acetate / Nickel silver

- Integral hinge

- 50 - 20 - 140 B: 43.3

- Base curve: 450

- ED: 52.9

- Panto angle: 13

RADLEY

RDO 6059

Classic Panto style. Slim ruffle metal temples inspired by Radleys spring collection and handmade acetate tips.



RDO 6055

Easy to wear soft square. Style features curved laminations at temple and peekaboo lamination on SKU 109.



RDO 6055 · 101

Gloss brown horn front and temple with Yves blue temple lamination



RDO 6055 · 109

Gloss olive crystal frame with grey tort laminations at front and temple



RDO 6055 · 161

Gloss patterned purple tort front & temple with amber crystal temple lamination



- Acetate
- Spring hinge
- 52 - 17 - 140 B: 40.5
- Base curve: 450
- ED: 60.1
- Panto angle: 13

RADLEY

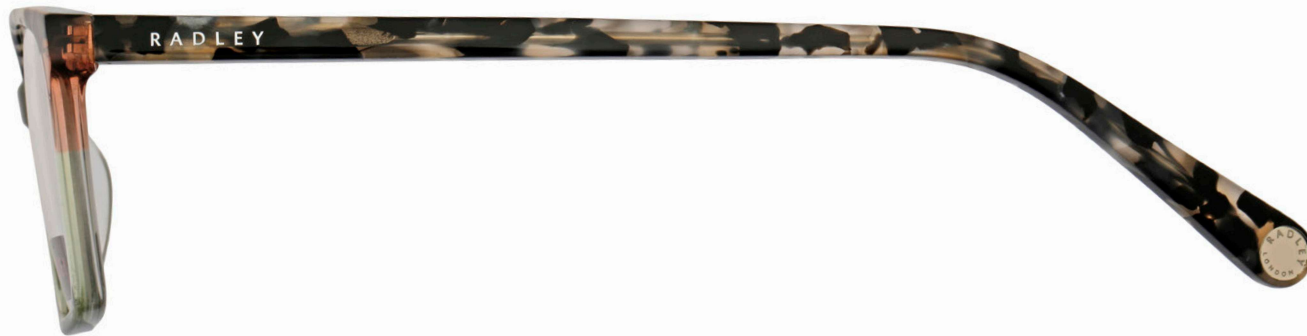
RDO 6055

Easy to wear soft square. Style features curved laminations at temple and peekaboo lamination on SKU 109.



RDO 6058

Soft cat eye made from HD acetate. Model features playful front laminations and slim temples.



RDO 6058 • 101

Gloss horn berry & navy / Berry & rose gold



RDO 6058 • 105

Gloss crystal pink, solid navy & blue tort /
Crystal pink & rose gold



RDO 6058 • 109

Gloss olive crystal, grey tort & crystal pink /
Crystal pink & rhodium



- Acetate
- Spring hinge
- 51 - 15 - 140 B: 39.1
- Base curve: 450
- ED: 57.4
- Panto angle: 13

RADLEY